

FT

CREATE END OF DAY CONTRACT

Click on File, Symbol, New.

The Create New Symbol window will open.

Select End of Day in the Create New Symbol window, you will have a list of data supplier formats that FT is compatible with.

In this window you do not need to enter the contract's symbol, but you do need to enter the file format where the data will be collected.

Exchange	Time Z...	Delay
CHICAGO BOARD OF T...	1	10
CHICAGO MERCANTILE...	1	0
EUREX	-6	15
HONG KONG FUTURES	-13	0
I.P.E. (LONDON)	-5	0
L.I.F.F.E. (LONDON)	-5	0
L.M.E. (LONDON)	-5	0
MATIF	-6	0

Format	Division
1-MetaStock	None
2-Metastock 6.5	CSI
3-TC2000-V4	Futures
4-TC2000-Old V3	Indexes
5-CSI	NASDAQ100
6-Computrac	Stocks
7-TC2000-V4	TC2000-V4

Type: Real Time Manual End of Day

Units: 1/4 1/8 1/16 1/32 1/64 1/128 Tick Size

Description:

Symbol:

Time Zone: FTGT Symbol: Trading Time:

Minutes to wait after close: minutes

Select Auto Create OK Cancel

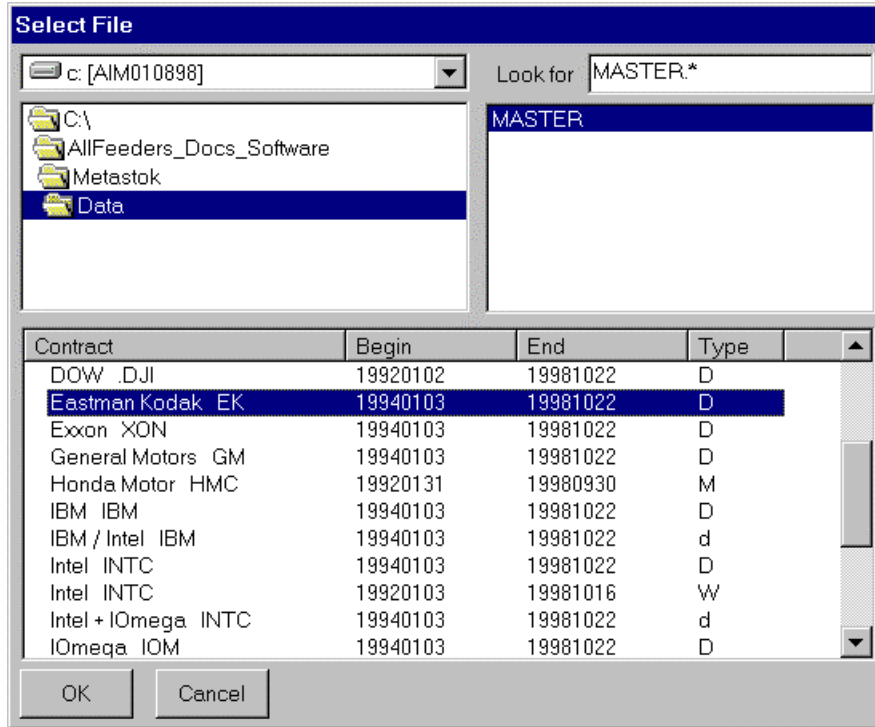
For the new TC2000 version 4 format you just need to select the format 3-TC2000-V4, type the symbol that you want on the Symbol box and click OK. Also you can just press F4 in your keyboard at any time, type a new symbol and click OK, the chart will be created using the TC2000 database.

In this example we will create an End of Day contract for the stock Eastman Kodak that will be updated through a file that has MetaStock format.

Click the Select button and the Select File window will open.

Using the drive list, and the folder list, find the MASTER file that you want to use. The MASTER file is the Metastock file that has a resume of all files in a folder. For CSI format the file to look for is the QMASTER, for Computrac is MASTER, and for the new Metastock 6.52 format look for the file EMASTER.

If you want select a division that you want this chart under the End Of Day Section.

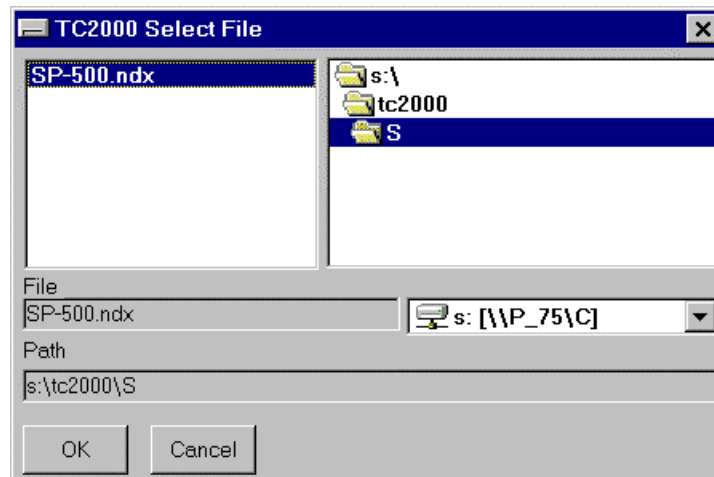


On the bottom box you will see the list of all files in this folder, select the one you want, in this case Eastman Kodak and click OK.

Click OK on the contract new window and the chart will be created.

Auto Create - If you click on Auto Create and not on the Select button all charts on this master file will be create, just go to the Plan list (click Plan on the Main Menu). Look under End of Day and under the division you had used, **open the charts there**.

For TC2000 Version 3 format you will see a window as shown below.



Use the drive list and the folder list to find the symbol that you want in the file list. Click on the file name of this contract, in the above picture we found the SP-500.NDX file that is located in the TC2000\S folder, and click the OK button.

You will return to the create new contract window and you will see in the Description box the name of the file that you selected. In this case S:\TC2000\S\SP500.ndx.
Click the OK button, the chart will be created.