

EXCHANGES

The correct setup of the exchanges is very important for the Fibonacci Trader program.

CHECKING TIME ZONES

When you run the Fibonacci Trader the first time the program will find in your Windows setup in what time zone you are in. This information will be used to setup all default exchanges. For a correct start is important to check on the Exchanges window if the program did a correct time zone setup.

Exchange	Time Zone	Delay
I.P.E. (LONDON)	-5	0
L.I.F.F.E. (LONDON)	-5	0
L.M.E. (LONDON)	-5	0
MATIF	-6	0
N.Y.M.E.X. (NEW YORK)	0	0
NASDAQ	0	15
NEW YORK STOCK EXCHANGE	0	20
S.M.E.X. (SINGAPORE)	12	0

Exchange Name:

Time Zone: Real Time Delay: minutes
Minutes to wait after close: minutes

Difference in hours from your computer time to New York time is: **0.00 hours**

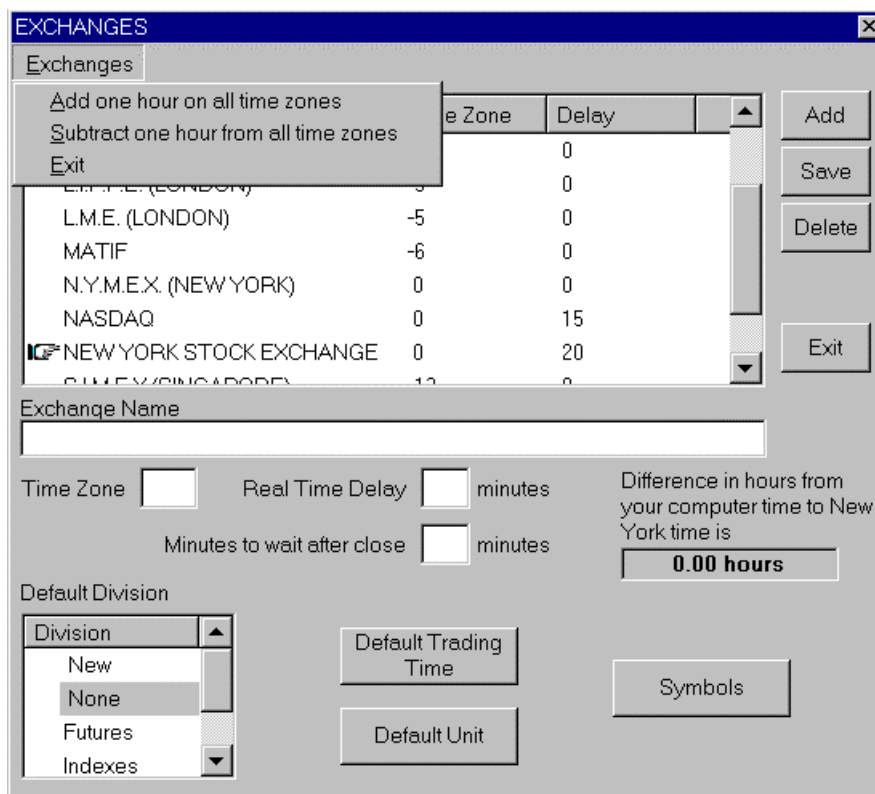
Default Division: (New, None, Futures, Indexes)

Buttons: Add, Save, Delete, Exit, Default Trading Time, Default Unit, Symbols

Click on File, Exchanges, Edit Exchanges, the Exchanges window will open, check the box "Difference in hours from your computer time to New York time is", this must show the value of your local time minus New York time, the following table has some examples of correct values.

Local	Difference
New York	0.00
CST	-1.00
MST	-2.00
PST	-3.00
London	5.00
Paris	6.00

Let's assume that your computer time is 21:00 and in New York the time is 11:00, you will need to have on the "Difference in hours from your computer time to New York time is" box the value 21-11 = 10. If the information in the "Difference in hours from your computer time to New York time is" box is not correct then click on the Exchanges menu at the Exchanges window and you will have the following options:

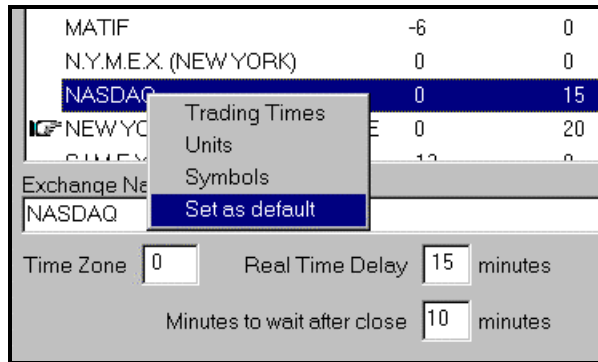


- a- Add one hour on all time zones.
- b- Subtract one hour from all time zones

Select one of these options until the "Difference in hours from your computer time to New York time is" box show the correct value for your local time.

SELECT THE DEFAULT EXCHANGE

The other important option in this window is the selection of the default exchange. The default exchange on the program is the New York Stock Exchange. To change that right click on the exchange you want to make default and click Set as default.



The hand that was pointing to New York Stock Exchange will change to the one that you select. When using the program if you press F5 the Add Symbol will open and all parameters of the default exchange will be used.

EXCHANGES OPTIONS

In the same submenu you can select to edit the default trading times, units or edit symbols for the selected exchange, the same submenu options can be also selected using the respective buttons on the Exchanges window.

The list divisions will be discuss later on this manual.

SYMBOLS

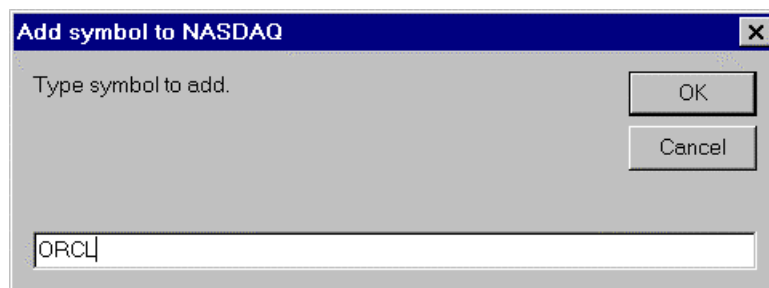
If you press the symbols button the symbols list for the actual selected exchange will open.

Symbol	Description	Division	Unit	Open	Close
INTC	INTEL CORP	Stocks	1/32	9:30	16:00
MSFT	Microsoft	Stocks	1/32	9:30	16:00
RHAT	RHAT	Stocks	DEC 2	9:30	16:00

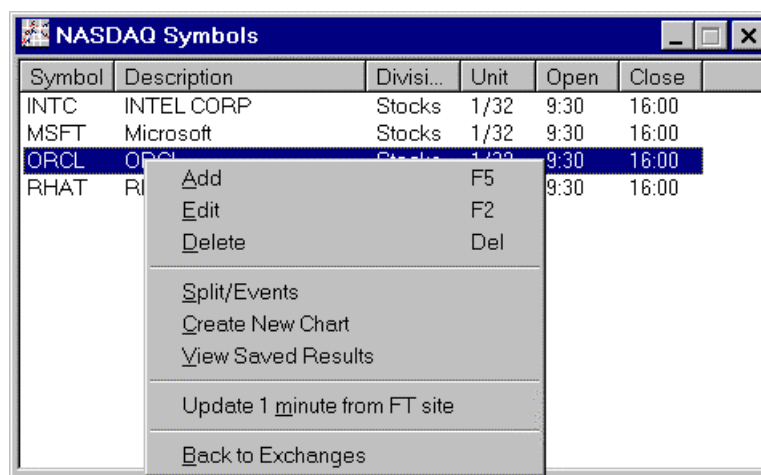
In this case the NASDAQ exchange symbols list open and we have in the list 3 symbols. Note that INTC and MSFT are displayed in 1/32 and RHAT is displayed with 2 decimals, the divisions and trading times are the same.

To insert a new symbol in this exchange list press the F5 button or right click the white list box and click ADD.

The Add Symbol input box will open, type the symbol and click OK.



In this case we typed the symbol ORCL and clicked OK. Now the list has one more symbol ORCL. It is important to say that at any time you can press the F5 button to insert a new symbol, when the Exchanges window is not opened the symbol will be inserted in the default exchange (the one that has a hand on the exchanges list).



If you right click a symbol the menu will open and you will have the following options.

Add – Add a symbol as explained above

Edit – Edit the parameters of this specific symbol.

Delete – Delete this symbol (ALL COLLECTED DATA FOR THIS SYMBOL WILL BE LOST).

Split/Events – Insert, edit or delete a split for this symbol.

Create New Plan – Create a plan in the 3 time frames you want

View Saved Results – This is used to see saved results on backtests of your systems for this symbol.

Update 1 minute from FT site – See our web site for more information.

Back to Exchanges – Will close the Symbols window and go back to the Exchanges window.

Note : For Quote.com, PCQuote (internet), Comstock (internet), any broker using the Townsend Analytcs Server or eSignal there will be an extra option in the menu to download data from their site.