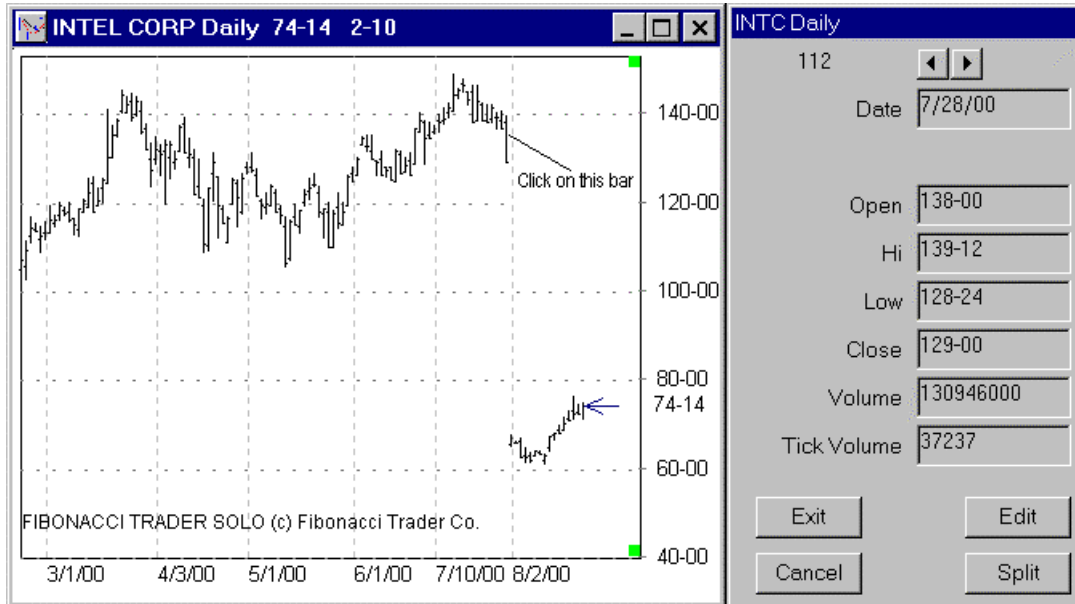


# FIT

## SPLIT/EVENTS

When on the edit bar window of a daily chart you have an extra button, the split button is used to split contract/symbol.



Click on it and the split window will open.

Date	Split	Div.
7/28/00	0.5	0

Date: 7/28/00  
 Split: .5  
 Dividend:   
 Ex.: 2 x 1 = 0.5  
 3 x 1 = 0.33333  
 3 x 2 = 0.66666  
 4 x 1 = 0.25  
 READY.

The date must be the last date before the split, type the split number, in the case of the chart above it was 2 x 1 = 0.5, click insert to insert the new split, click Exit, the daily chart and any other chart for this symbol will be corrected.

