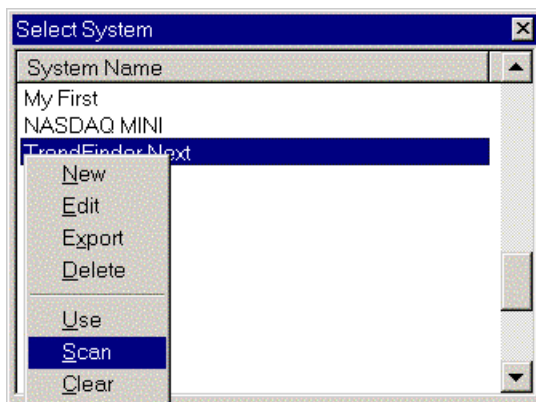


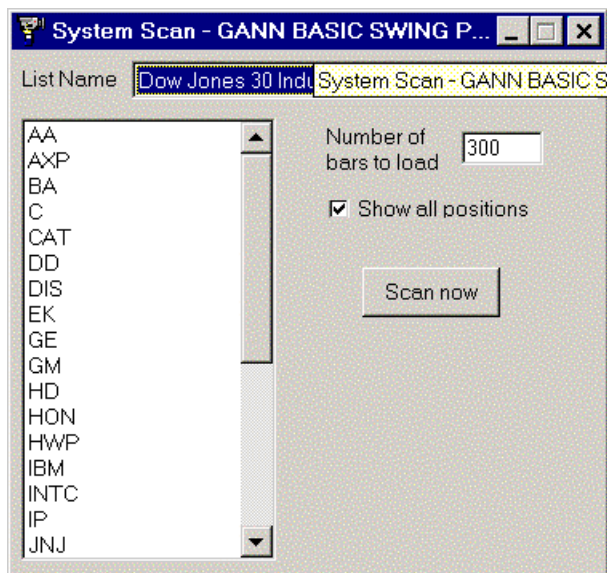
FT

System Scan

You can scan your system for a list of charts and see the ones that had a change on the system position on the last bar of the database or the position of all charts on the list. Click on System and a list of the plans will open.



To scan a system right click on the system you want to scan and click Scan, the scan window for this system will open.



The combo box at the top of the window will show all the lists that TC2000 has including the ones that you create yourself. Select one of the lists from the List Name box, that list stocks or indexes will appear on the list box.

Number of bars to load is how many bars this plan will use to do the calculations, try to keep this number as low as possible, this way the results will come faster, but remember to have enough bars for the calculations. Normally 300 is a good number.

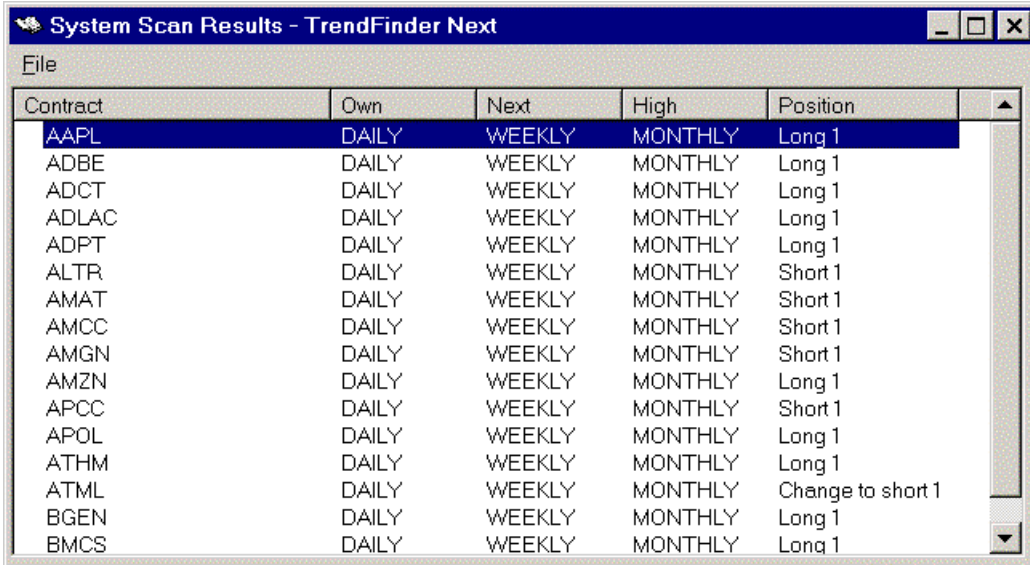
You have the option to show all positions or only the ones that changed direction on the last day. When SHOW ALL POSITIONS is checked all charts on that list will be scanned and all charts will be listed on the result window, showing the actual position of each one. When SHOW ALL POSITIONS is not selected the result list will show just the scanned charts that changed position on the last bar.

Click Scan to begin the Scan.

The System Scan Result window will open with the list of charts found.

Double click on a chart to open it.

Click File and you can select to print the list or save this results in a text file.



The screenshot shows a window titled "System Scan Results - TrendFinder Next". It contains a table with the following columns: Contract, Own, Next, High, and Position. The table lists 18 contracts with their respective scan parameters and positions. The first row, AAPL, is highlighted in blue.

Contract	Own	Next	High	Position
AAPL	DAILY	WEEKLY	MONTHLY	Long 1
ADBE	DAILY	WEEKLY	MONTHLY	Long 1
ADCT	DAILY	WEEKLY	MONTHLY	Long 1
ADLAC	DAILY	WEEKLY	MONTHLY	Long 1
ADPT	DAILY	WEEKLY	MONTHLY	Long 1
ALTR	DAILY	WEEKLY	MONTHLY	Short 1
AMAT	DAILY	WEEKLY	MONTHLY	Short 1
AMCC	DAILY	WEEKLY	MONTHLY	Short 1
AMGN	DAILY	WEEKLY	MONTHLY	Short 1
AMZN	DAILY	WEEKLY	MONTHLY	Long 1
APCC	DAILY	WEEKLY	MONTHLY	Short 1
APOL	DAILY	WEEKLY	MONTHLY	Long 1
ATHM	DAILY	WEEKLY	MONTHLY	Long 1
ATML	DAILY	WEEKLY	MONTHLY	Change to short 1
BGEN	DAILY	WEEKLY	MONTHLY	Long 1
BMCS	DAILY	WEEKLY	MONTHLY	Long 1